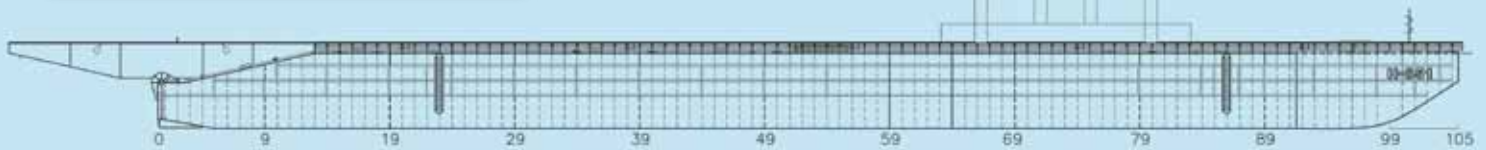
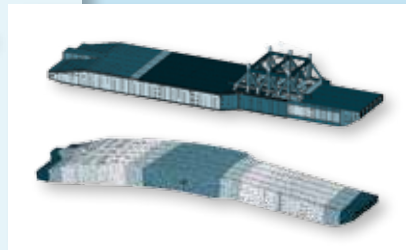


# RR MARITIME ENGINEERING BV

t a k i n g   o n   m a r i t i m e   c h a l l e n g e s   . . .   t o g e t h e r



## Transport and launch barge

# World's largest ocean going barge

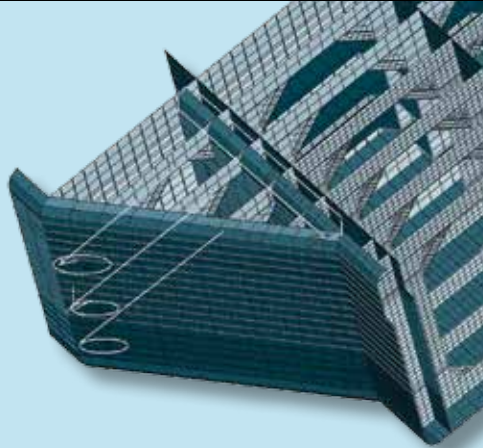
The H-851 barge of Heerema Marine Contractors is the largest ocean going launch/cargo barge in the world with a length of 260 meters. The barge is scheduled for the transportation and a floatover operation of a 23.600mT heavy topside.

This floatover operation requires the narrowing of the fore part of the barge over a length of 100 meters to a width of 42 meters.

The scope of work comprises the detailed engineering of the modification and preparation of classification documentation including FEM analysis.

# RR MARITIME ENGINEERING BV

t a k i n g   o n   m a r i t i m e   c h a l l e n g e s   . . .   t o g e t h e r

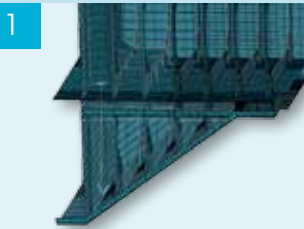


## Transport and launch barge

To make the world's largest barge suitable for the installation by float-over of a dedicated platform, the bow of the barge will be narrowed over a length of 100 meters to a width of 42 meters resulting in a slight reduction to the original capacity. Despite this modification it will still remain capable of transporting and launching the largest jackets and compliant towers.

## Main technical particulars

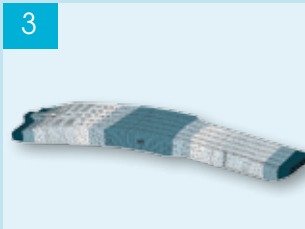
Length	260.0 m
Breadth	63.0 m
Depth	15.0 m
Max. loading capacity	130,514 mT
Max. launching capacity	60,000 mT



**1**  
Detailed Finite Element Calculations were performed in order to determine required strengthening



**2**  
DSF (Deck Supporting Frame) suitabel for a 23,600 mT topside



**3**  
Calculations of bending moments and shear forces during load-out operations and transport



**4**  
Design in full compliance with dedicated Class requirements